

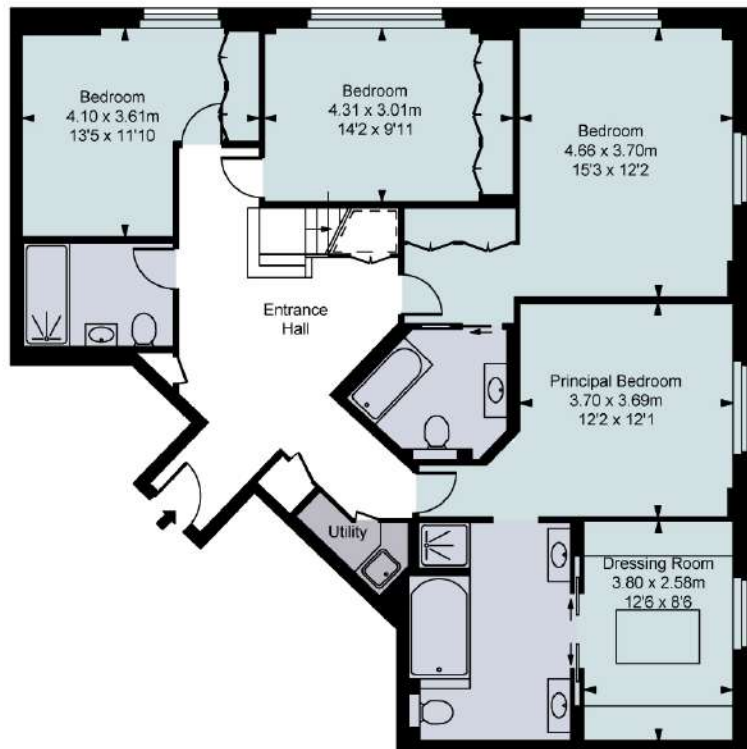


Carlyle Court, SW10

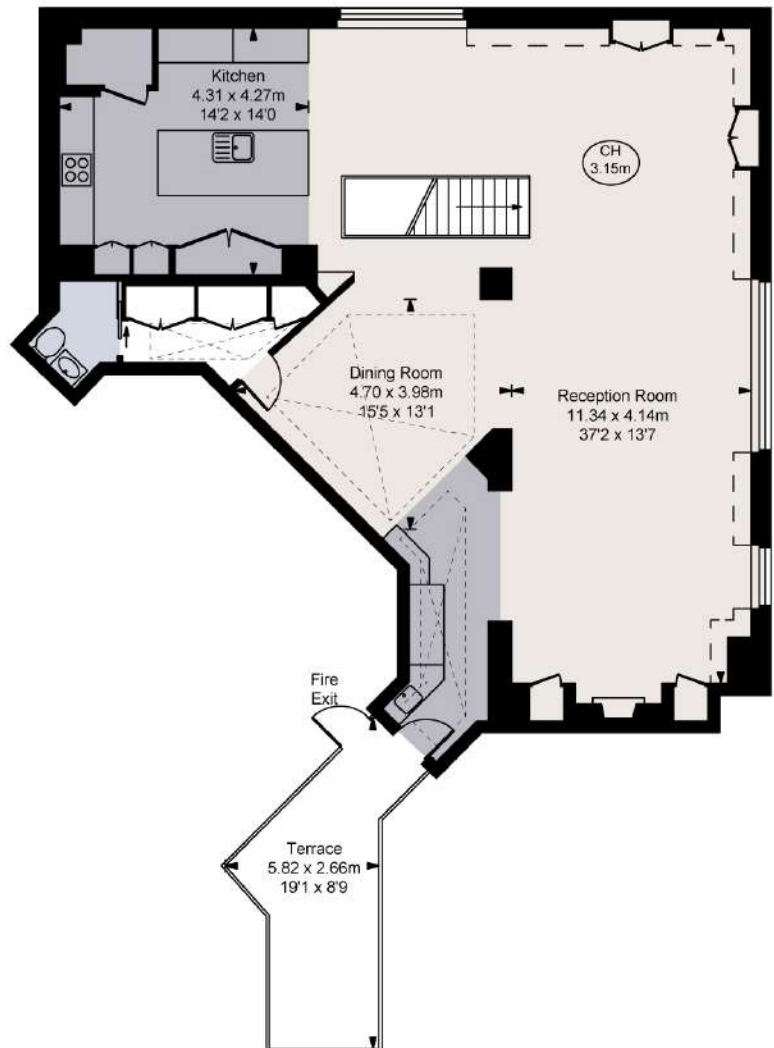
Approximate Gross Internal Area
232.17 sq m / 2,499 sq ft

(Including restricted height
under 1.5m [] [] [] [])

(CH = Ceiling Heights)



Third Floor
Approximate Gross Internal Area
119.51 sq m / 1,286 sq ft



Fourth Floor
Approximate Gross Internal Area
112.66 sq m / 1,213 sq ft